

---

**GROHE**  
TOUCH FREE PRODUCT RANGE  
For LIXIL Africa

*Pure Freude  
an Wasser*



# TOUCH FREE

Why Electronics	2-3
The Benefits of GROHE Electronics	4-5
The Remote Control	6-7
The Remote App	8-9
Euroeco Cosmopolitan	10
Essence E	14
Eurosmart Cosmopolitan	16



# WHY ELECTRONICS?

## THE HANDS-DOWN WINNER FOR GREAT HYGIENE

GROHE infrared technology is traditionally used mainly for basins, urinals and WCs. It's here that the hygienic benefits of Touch free activation become particularly evident to eliminate a potential source of cross-contamination and spread of germs.

## TOUCH FREE COMFORT

GROHE has been making infrared products for many years, ensuring that all fittings start and stop the flow of water reliably and precisely. The results are comfortable, Touch free operated sustainable products, for young and old.

## BUILT-IN COST EFFECTIVENESS

GROHE infrared fittings offer exceptional value. With relatively low acquisition costs our range offers a host of features to keep your water, energy and maintenance costs to a minimum. Ideal for public or residential use.

The optimum in this field are our infrared products with Powerbox, which comes with a self generating power supply. Additional power supplies not required





# THE BENEFITS OF GROHE ELECTRONICS ARE CLEAR

## TOUCH FREE PRODUCT FOR VARIOUS DRAW-OFF POINTS

GROHE's Touch free range deliver solutions for Basins, Showers, WC's and Urinal's.

The main functions can be set without any additional devices needed. They include:

- Automatic flushing to prevent water stagnating
- Thermal disinfection
- Cleaning mode (function prevents water flow)

With the remote control or the app the settings of all functions can be altered even more precisely to specific needs or surroundings.

## RELIABLE AND PROVEN TOUCH FREE TECHNOLOGY

GROHE infrared is a proven and reliable technology; it has been successfully used and updated in the last 40 years, resulting in a highly dependable product.

For commercial settings the GROHE Power Box can help save energy too. A turbine converts kinetic energy into stored electrical energy every time the tap is used, just 60 seconds of water flow provides enough electricity to power the fitting for 24 hours.

## DESIGN

GROHE's Touch free products come in a range of designs, all typified by their sleek modern lines and sleek, easy-to-clean detailing. Whatever your project we have the perfect Touch free design to fit perfectly with your style.

## EASY INSTALLATION

Not only is the mechanical installation easy but also the electronic installation is made installer-friendly, with standard factory settings programmed to fit most needs right away. The electronics can be fed by a transformer but can also be fed by a battery with an exceptional seven year lifespan (with 150 actuations a day).

The bi-directional sensor can be programmed by hand, and also readout and programmed via remote control or via an app.







## THE REMOTE CONTROL

All functions and settings can be changed with the new GROHE remote control. The menu feature a logical structure for simple operation. It is intuitive and straightforward to operate and gives plumbers, caretakers or facility managers access to the products.

The integrated screen clearly displays all the setting options and settings – even thermal disinfection can easily be activated just by pressing a button, additionally it shows various usages in an instant.





# THE REMOTE APP

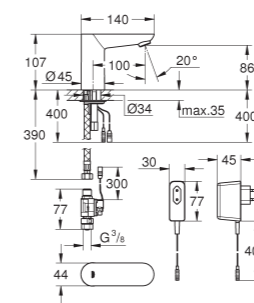
Selected GROHE products use Bluetooth® to communicate via smartphones and tablets with a free downloadable app (via Apple or Android Store). The advantage of the app is that you can read multiple products from a distance of around 15 metres. The products can be given individual names and can be made password-protected to prevent interference from outside.

The app can make an analysis of average consumption over the past 30 days, displays the number of automatic flushes and the time of the last automatic flush (see page 36). The app can also track the activations of thermal disinfection including the last thermal disinfection - all in real time.





# EUROECO COSMOPOLITAN



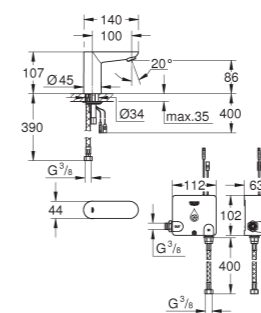
**G-36269000**  
**4005176893179**



Euroeco Cosmopolitan E Infra-red electronic basin tap without mixing device

With infrared sensor for bi-directional communication for monitoring, configuration and servicing. For cold or premixed water. Without power supply 36338000 (required). GROHE EcoJoy mousseur 5.7 l/min. Flexible connection hoses. Dirt strainers. Solenoid valve. Rapid installation system. 7 pre-set programs include auto flush, thermal disinfection & cleaning mode. Additional functions and precise settings by remote control 36 407. CE approved. Noise classification 1 in accordance with DIN4109. Type of protection faucet IP 59K.

Gross weight (kg) with packaging: 1,225



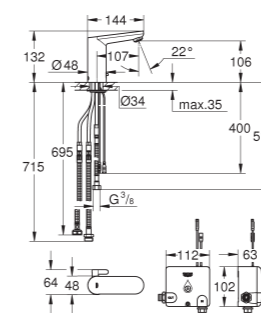
**G-36384000**  
**4005176982774**



Euroeco Cosmopolitan E Electronic basin tap with powerbox

Infra-red electronic basin tap 1/2" without mixing device. With infrared sensor for bi-directional communication for monitoring, configuration and servicing. Including Powerbox self-generating power system. GROHE EcoJoy 6.0 l/min mousseur. Flexible connection hose. Dirt strainer. Rapid installation system. Powerbox. Power generator with water turbine. Internal energy saving unit. With use of 60 s/24 h stand-by, 260 s/100 h stand-by. With additional backup power. 7 pre-set programs including auto flush, thermal disinfection & cleaning mode. Additional functions and precise settings by remote control 36 407.

Gross weight (kg) with packaging: 2,115



**G-36386001**  
**4005176311673**



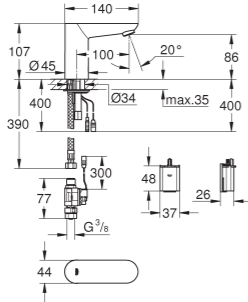
Euroeco Cosmopolitan E Electronic basin tap with powerbox and mixing device

Infra-red electronic basin mixer 1/2" with mixing device and adjustable temperature limiter. With infrared sensor for bi-directional communication for monitoring, configuration and servicing. Including Powerbox self-generating power system. GROHE EcoJoy 6.0 l/min mousseur. Including all flexible connection hoses. Non-return valve. Dirt strainer. Rapid installation system. Powerbox. Power generator with water turbine. Internal energy saving unit. With use of 60 s/24 h stand-by, 260 s/100 h stand-by. With additional backup power. 7 pre-set programs including auto flush, thermal disinfection & cleaning mode. Additional functions and precise settings by remote control 36 407.

Gross weight (kg) with packaging: 2,700







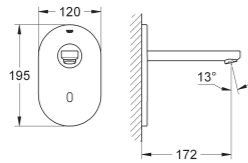
**G-36271000**  
**4005176893193**



Euroeco Cosmopolitan E infra-red electronic basin tap, with battery

With infrared sensor for bi-directional communication for monitoring. Configuration and servicing. For cold or premixed water. 6 V lithium battery. type CR-P2. battery lifetime: approx. 7 years (150 actuations a day). GROHE StarLight finish. GROHE EcoJoy mousseur 5.7 l/min. flexible connection hoses. Dirt strainers. External solenoid valve. External battery. Rapid installation system. Multistage battery status display. 7 Pre-set programs: Auto flush. Thermal disinfection. Cleaning mode. Additional functions and precise settings by remote control 36 407. CE approved. Noise classification i in accordance with DIN 4109. Type of protection faucet IP 59K. min. recommended pressure 1.0 bar.

Gross weight (kg) with packaging: 1.245



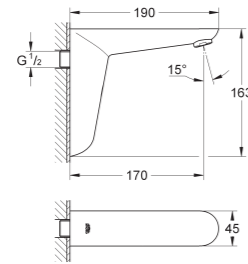
**G-36273000**  
**4005176893216**



Euroeco Cosmopolitan E infra-red electronic basin tap

With infrared sensor for bi-directional communication for monitoring. Configuration and servicing. For cold or premixed water. With transformer 100-230 V AC. 50-60 Hz. 6 V DC. GROHE StarLight finish. GROHE EcoJoy technology for less water and perfect flow. Laminar flow straightener 9 l/min. Chrome escutcheon. Chrome spout. Projection 172 mm. 7 Pre-set programs: Auto flush, thermal disinfection, cleaning mode. Additional functions and precise settings by remote control 36 407. Set for final installation for concealed fitting box. 36 336 001/36 337 001. CE approved. Noise classification i in accordance with din 4109. Min. Recommended pressure 1.0 Bar.

Gross weight (kg) with packaging: 1.510



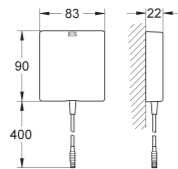
**G-36274000**  
**4005176893223**



Euroeco Cosmopolitan E Infra-red electronic wall basin tap without mixing device

With infrared sensor for bi-directional communication for monitoring, configuration and servicing. For cold or premixed water. 6V lithium-battery, type CR-P2. Battery lifetime approx. 7 years (150 actuations a day). Metal body. Multistage battery status display. 7 pre-set programs including auto flush, thermal disinfection & cleaning mode. Additional functions and precise settings by remote control 36 407. CE approved.

Gross weight (kg) with packaging: 1,670



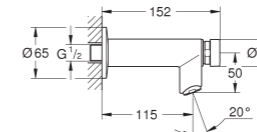
**G-36338000**  
**4005176896743**



Switch-mode power supply

For one eye infra-red wash basin mixer. Switch mode power supply with operating voltage 100-230 V AC, 50 - 60 Hz. For concealed socket with cover and strain relief. Suitable for the following products: 36 444 000, 36 440 000, 36 411 000, 36 413 000, 36 409 000, 36 325 001, 36 269 000, 36 015 001, 36 016 001 & 36 421 000.

Gross weight (kg) with packaging: 0,305



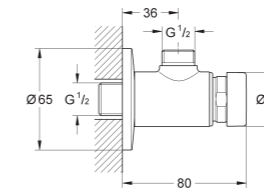
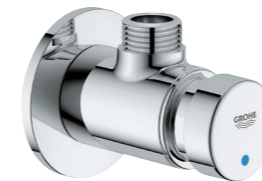
**G-36266000**  
**4005176893148**



Euroeco Cosmopolitan self-closing pillar tap wall mounted

Wall mounted. Marking: blue/red. GROHE StarLight chrome finish. GROHE EcoJoy technology for less water and perfect flow. 5.7 l/min flow rate. 3 Adjustable flow times: short - medium - long (factory setting: short), approx. 7, 15, 30 sec (pressure dependent). Escutcheon.

Gross weight (kg) with packaging: 0,650



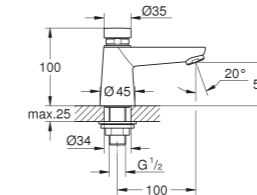
**G-36267000**  
**4005176893155**



Euroeco Cosmopolitan S self-closing shower valve

Exposed installation. For cold or premixed water. Marking: blue/red. GROHE StarLight chrome finish. 3 Adjustable flow times: short - medium - long (factory setting: medium). Approx. 7, 15, 30 Sec (pressure dependent). Min. Recommended pressure 1.0 Bar.

Gross weight (kg) with packaging: 0.360



**G-36265000**  
**4005176893131**



Euroeco Cosmopolitan Deck mounted self-closing pillar tap

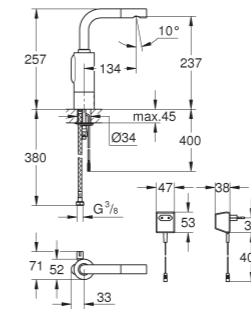
Marking: blue/red. GROHE StarLight chrome finish. 3 Adjustable flow times: short - medium - long (factory setting: short), approx. 7, 15, 30 sec (pressure dependent).

Gross weight (kg) with packaging: 0,740





# ESSENCE E



G-36088000  
4005176869921



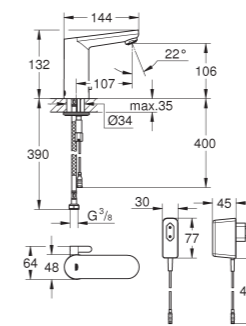
Essence E basin mixer with mixing device

Single hole installation. with plug transformer 230 V. 50 Hz. 3.2 VA. GROHE StarLight chrome finish. GROHE EcoJoy 5.0 l/min flow limiter. integrated mousseur. solenoid valve integrated in housing. flexible connection hoses. dirt strainers. rapid installation system. automatic safety stop after 60 sec (factory set). additional functions and precise settings by remote control 36 407. automatic flushing after 1 or 3 days without use. activation of permanent run for thermal disinfection for 3.5 or 11 min. CE approved. noise classification I in accordance with DIN 4109. type of protection faucet IP 59K. min. recommended pressure 1.0 bar.

Gross weight (kg) with packaging: 3.090



# EUROSMART COSMOPOLITAN



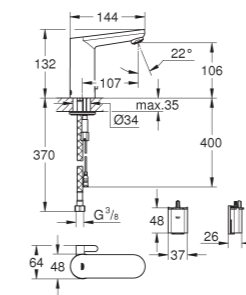
**G-36325001**  
**4005176305764**



Eurosmart Cosmopolitan E Infra-red electronic basin mixer with mixing device

With infrared sensor for bi-directional communication for monitoring, configuration and servicing, with plug transformer 100-230 V AC, 50-60 Hz, 6 V DC. GROHE StarLight finish. GROHE EcoJoy mousseur 5.7 l/min. flexible connection hoses. non-return valve. dirt strainers. with integrated solenoid valve. rapid installation system. 7 pre-set programs: auto flush, thermal disinfection, cleaning mode. additional functions and precise settings by remote control 36 407. CE approved. noise classification I in accordance with DIN 4109. type of protection faucet IP 59K. min. recommended pressure 1.0 bar.

Gross weight (kg) with packaging: 1.635



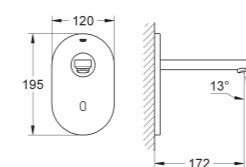
**G-36327001**  
**4005176305771**



Eurosmart Cosmopolitan E Infra-red electronic basin mixer with mixing device

With infrared sensor for bi-directional communication for monitoring, configuration and servicing. 6 V lithium battery. type CR-P2. battery lifetime: approx. 7 years (150 actuations a day). GROHE StarLight finish. GROHE EcoJoy mousseur 5.7 l/min. flexible connection hoses. non-return valve. dirt strainers. with integrated solenoid valve. external battery. rapid installation system. multistage battery status display. 7 pre-set programs: auto flush, thermal disinfection, cleaning mode. additional functions and precise settings by remote control 36 407. CE approved. noise classification I in accordance with DIN 4109. type of protection faucet IP 59K. min. recommended pressure 1.0 bar.

Gross weight (kg) with packaging: 1.590



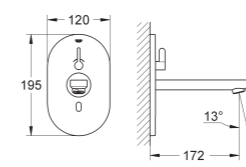
**G-36335SD0**  
**4005176896712**



Eurosmart Cosmopolitan E infra-red wall mounted basin mixer

With infrared sensor for bi-directional communication for monitoring, configuration and servicing. for cold or premixed water. with transformer 100-230 V AC, 50-60 Hz, 6 V DC. GROHE EcoJoy technology for less water and perfect flow. laminar mousseur 9 l/min. stainless steel escutcheon. SuperSteel spout. 172 mm. 7 pre-set programs: auto flush, thermal disinfection, cleaning mode. additional functions and precise settings by remote control 36 407. set for final installation for concealed fitting box. 36 336 000/36 337 000. CE approved. noise classification I in accordance with DIN 4109. min. Recommended pressure 1.0 bar.

Gross weight (kg) with packaging: 1.716



**G-36315000**  
**4005176896590**

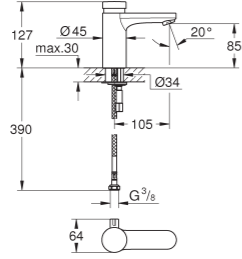


Eurosmart Cosmopolitan E infra-red wall mounted mixer

With infrared sensor for bi-directional communication for monitoring, configuration and servicing. with transformer 100-230 V AC, 50-60 Hz, 6 V DC. GROHE StarLight finish. GROHE EcoJoy technology for less water and perfect flow. laminar flow straightener 9 l/min. chrome escutcheon. chrome spout. projection 170 mm. 7 pre-set programs: auto flush, thermal disinfection, cleaning mode. additional functions and precise settings by remote control 36 407. set for final installation for concealed fitting box. 36 339 000. CE approved. noise classification I in accordance with DIN 4109. min recommended pressure 1.0 bar.

Gross weight (kg) with packaging: 1.715





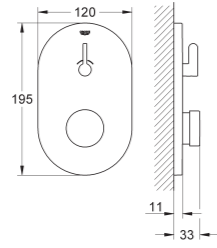
**G-36317000**  
**4005176896514**



Eurosmart Cosmopolitan T self-closing basin mixer with mixing device

GROHE StarLight chrome finish. GROHE EcoJoy 5.7 l/min flow limiter. 3 adjustable flow times: short - medium - long (factory setting: short). approx. 7, 15, 30 sec (pressure dependent). pressure range 0.5 to 6 bar. 2 flexible hoses. non-return valve. dirt strainers. min. recommended pressure 1.0 bar.

Gross weight (kg) with packaging: 1.410



**G-36321000**  
**4005176896552**



Eurosmart Cosmopolitan Self-closing shower mixer with mixing device

GROHE StarLight chrome finish. chrome escutcheon. 3 adjustable flow times: short - medium - long (factory setting: medium). approx. 7, 15, 30 sec (pressure dependent). pressure range 0.5 to 6 bar. dirt strainers. set for final installation for concealed fitting box. 36 322 001. without concealed body.

Gross weight (kg) with packaging: 1.450



20 Wright Street,  
Factoria,  
Krugersdorp, 1739  
South Africa

National After Sales Service Number: +27 (0) 861 21 21 21

# ONLINE PLATFORMS

Visit our websites and find an office/dealer/distributor closest to you.

**Websites:**

<http://www.lixil.co.za/>

[https://www.grohe.co.za/en\\_za/](https://www.grohe.co.za/en_za/)

**Social Media:**

 - @GROHE.Africa

 - @GROHE\_Africa

GROHE has a policy of continuous product development and advancements and therefore reserves the right to modify product specifications accordingly.



PART OF **LIXIL**